



Ashraf Sadek, Intl. Assoc. AIA, PE
Principal Architect/Engineer

Specialization: Business Development, Project Delivery/Construction Management/Architectural Engineering

Education: Master of Science; Civil and Environmental Engineering MS.-CEE, University of Wisconsin-Madison, 1994
Major-Construction Engineering and Management- "Operability and Maintainability"
Licensed Professional Engineer, State of Wisconsin, 2000
Licensed Asbestos Supervisor, State of Wisconsin, 1999
Licensed Architect in Egypt, 1980.
BS. Cairo University, 1980
Major-Architectural/Engineering, Cairo University, 1980

Affiliations: Professional member of the Construction Management Association of America (CMAA)
Professional II member of the American Correctional Association (ACA)
International Associate member of the American Institute of Architects (AIA)
Board member of Electronic, Media and Technology Committee (EMTC)
American Institute of Architects - Wisconsin

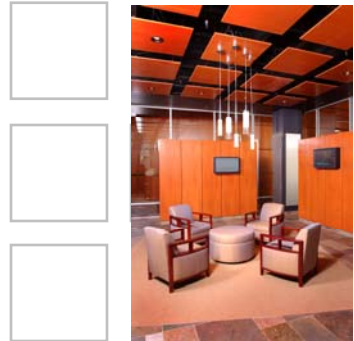
Publications: "Conceptual Model Process for Implementing Operability and Maintainability in the Industrial Petrochemical Industry." Master's thesis, University of Wisconsin-Madison, 1994.

Background: Over 28 years of national and international experience in construction industry including: architectural design, civil engineering, interior design, construction management, contract administration, specification writing, planning and scheduling, cost estimating, budgeting, computer graphics and programming, inspection, facilities and infra structure assessment, remodeling, and Operation and Maintenance (OM). Two years experience in construction management research, (VE) value engineering, constructability, (TQM) total quality management, and operability and maintainability.

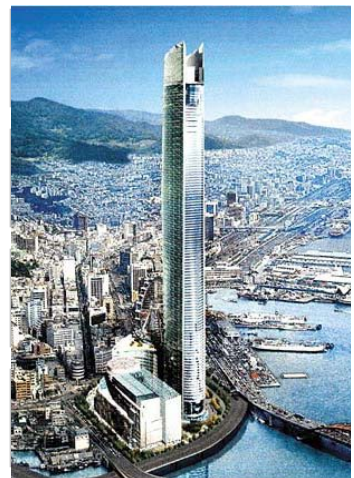
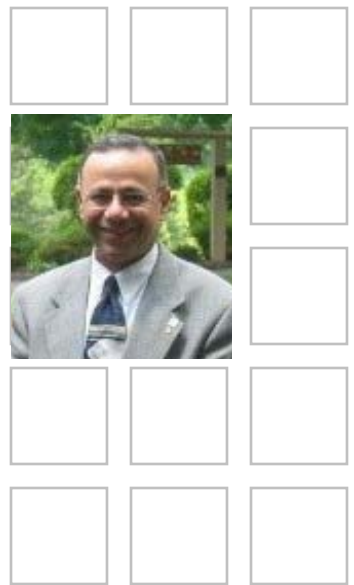
Supervise and assure Quality Control (QC) by implementing the program to accomplish the objectives or services, including communicating, approving, qualifying, and negotiating with clients, vendors, and sub consultants and authorizing contracts. Ensure subcontractors and vendors adhere to requirements, safety and standards. Monitor and supervise the Finance & Accounting activities throughout the project delivery process. Prepare project financial forecast.

Computer applications include; AutoCAD, Microstation, Microsoft Office, MS Project, Primavera, Excel, PowerPoint, Corel Draw, and Means Cost Works

Languages: Arabic, English, and French



Sonic Foundry
Wisconsin, USA



Busan Lotte Two
Busan, South Korea



Contact Information

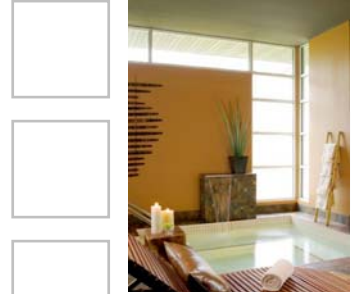
Melissa Destree, AIA, IIDA

Pure World Architecture
222 West Washington Avenue
Suite 310
Madison, WI 53703
USA

Tele - 00.1.608.268.1493
Cell - 00.1.608.345.3233

melissa@pureworldarchitecture.com

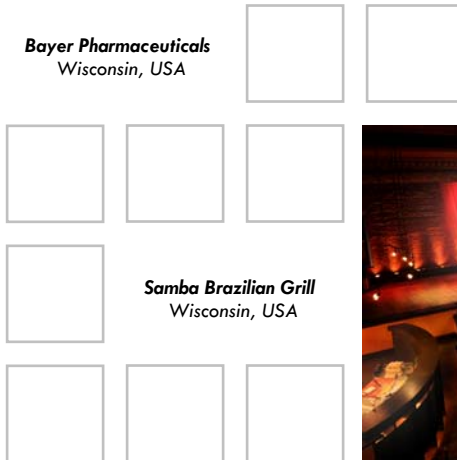
www.pureworldarchitecture.com



*Evensong Spa
Wisconsin, USA*



*Bayer Pharmaceuticals
Wisconsin, USA*



*Samba Brazilian Grill
Wisconsin, USA*

